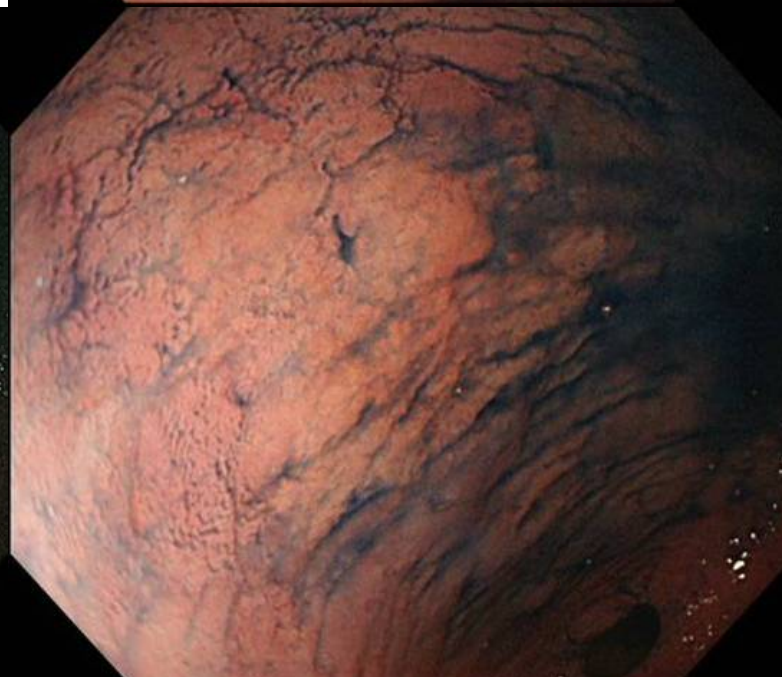
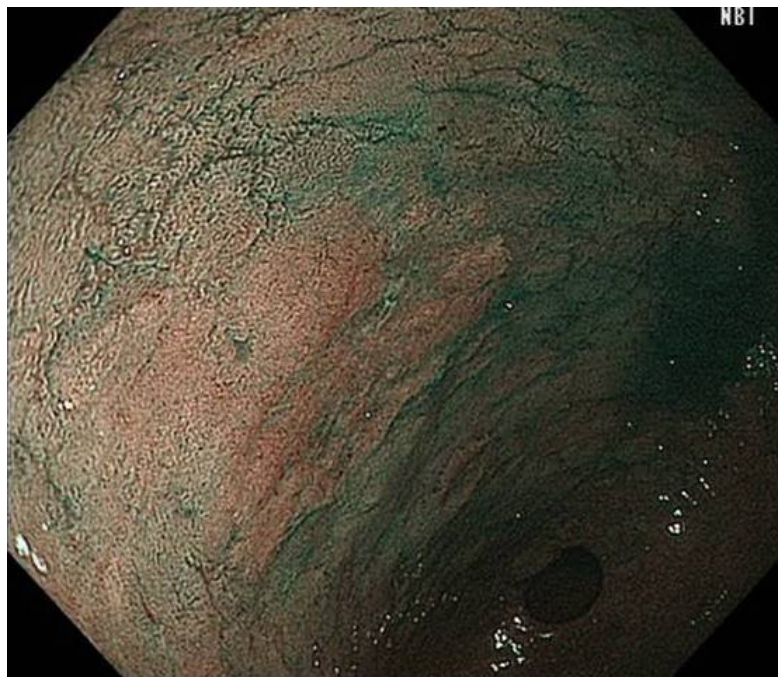


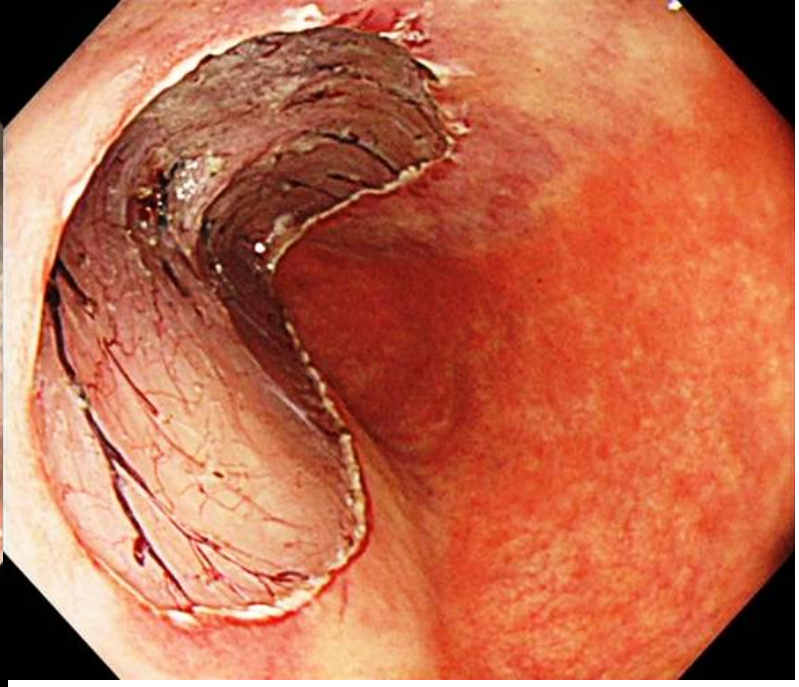
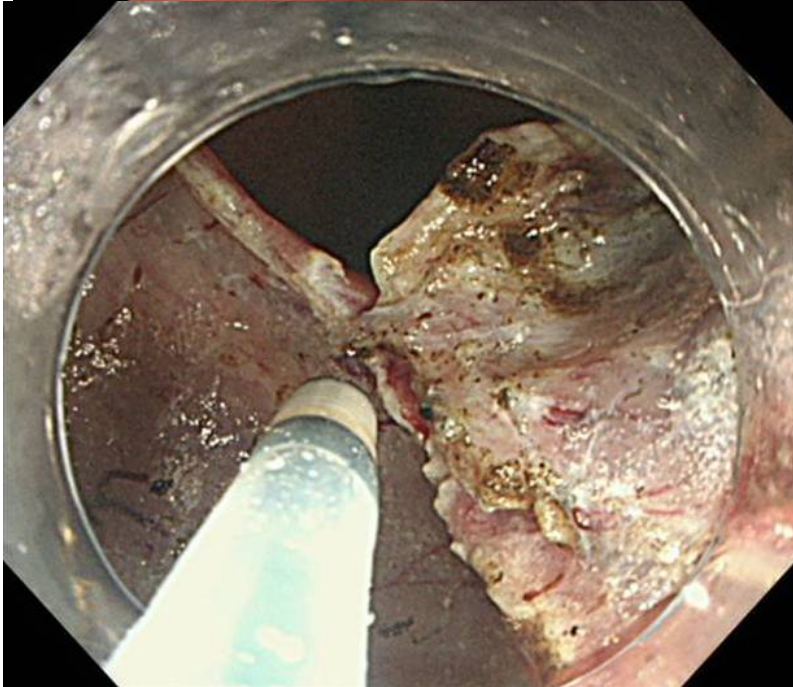
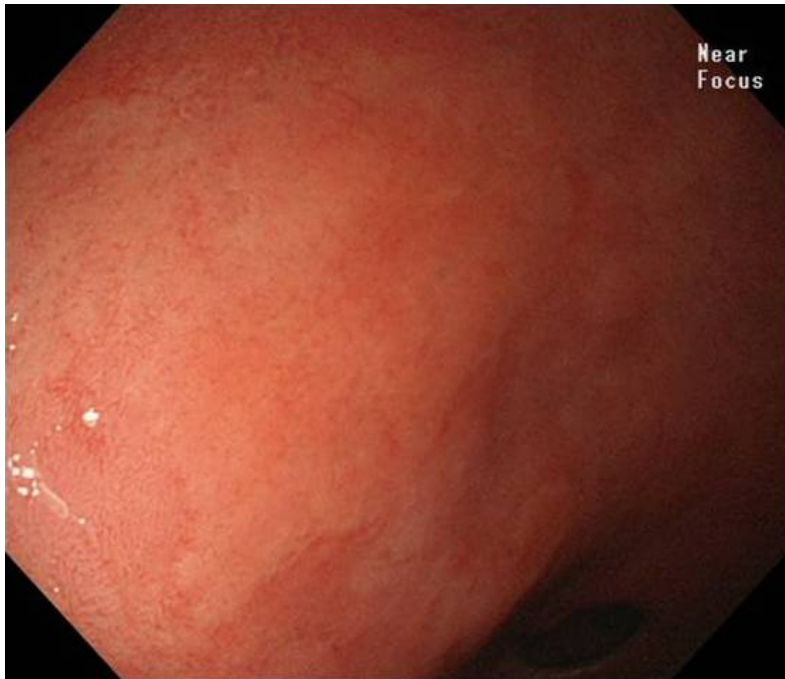
1. 胃癌粘膜切除

60歳台女性
前庭部前壁

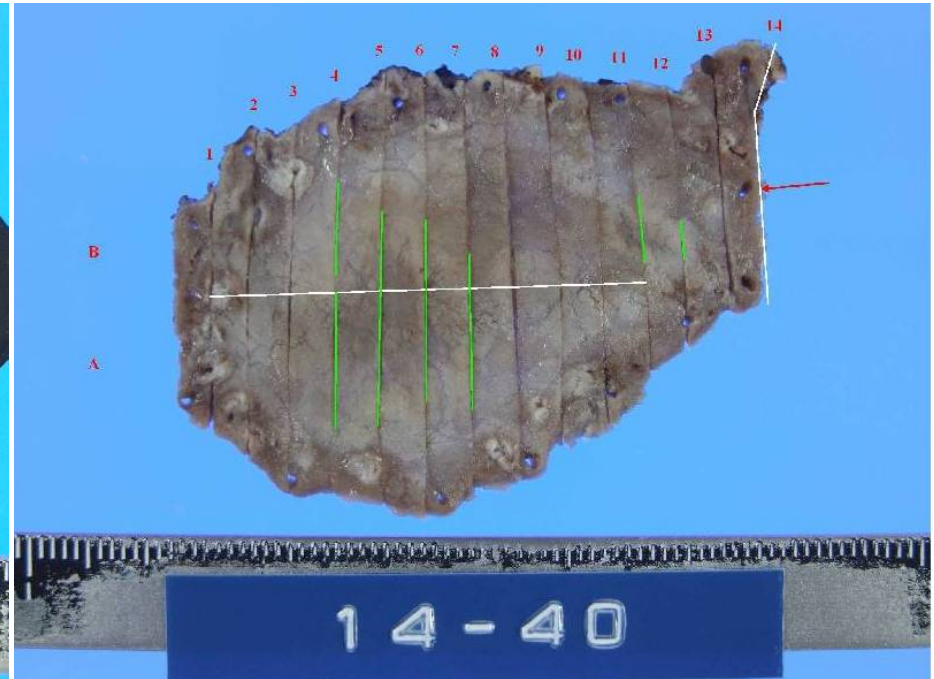
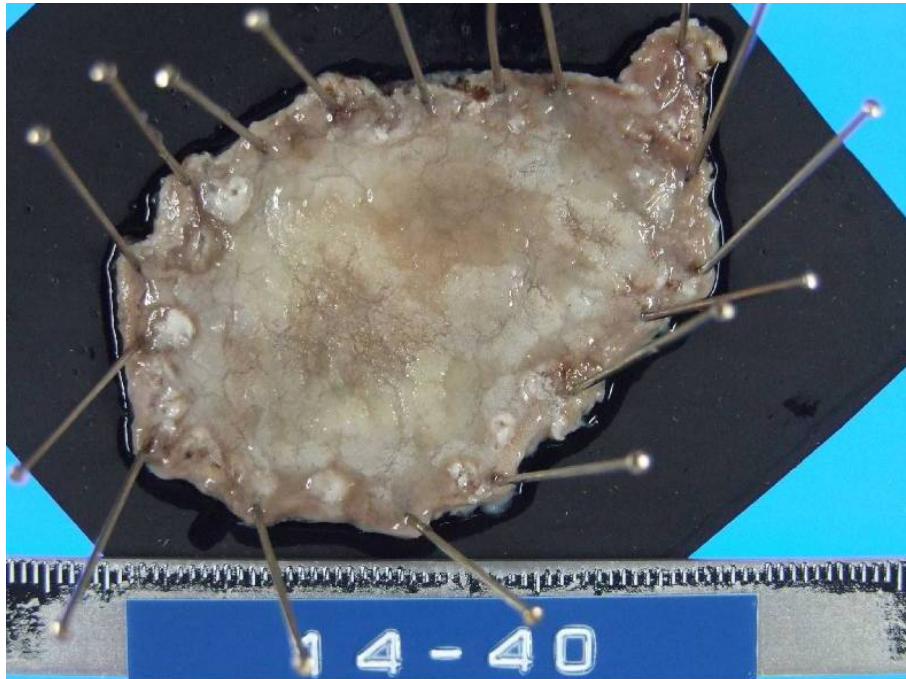
Ⅱa

* 通常観察では不明瞭
口側に小さなⅡcも併存





切除標本55×33mm



Stomach, ESD, double cancer, adenocarcinomas,
location: L: 1) large one: Type 0-IIc, tub1, pT1a(M),
ly0, v0, pHM0, pVM0; 2) small one: Type 0-IIc, tub1,
pT1a(M), ly0, v0, pHM0, pVM0